

1914-18

Museum Activity Sheets



About this Resource

Contents

About this Resource
P1
Visit Information
P1
Maps of the Museum
P2
Activity Sheets
P3

Investigate World War I through our rich collection of objects and documents.

Visit Information

If you would like further information or to arrange a free planning visit, please **email: education@argylls.co.uk**.

Be aware that there is a staircase between the entrance of the Museum and the World War I room, which may cause problems for those with limited mobility.

Before Your Visit

Teachers and group leaders must:

- ensure that they have enough adults to provide adequate supervision at all times during their visit, at least 1:10 with a maximum of 33 pupils per session;
- ensure that pupils have pencils, clipboards and activity sheets;
- ensure that pupils and accompanying adults know why they are visiting the Museum and what is expected of them;
- ensure that pupils wear sensible clothing and footwear; and,
- ensure that pupils bring packed lunches (if you have not made other arrangements).

During Your Visit

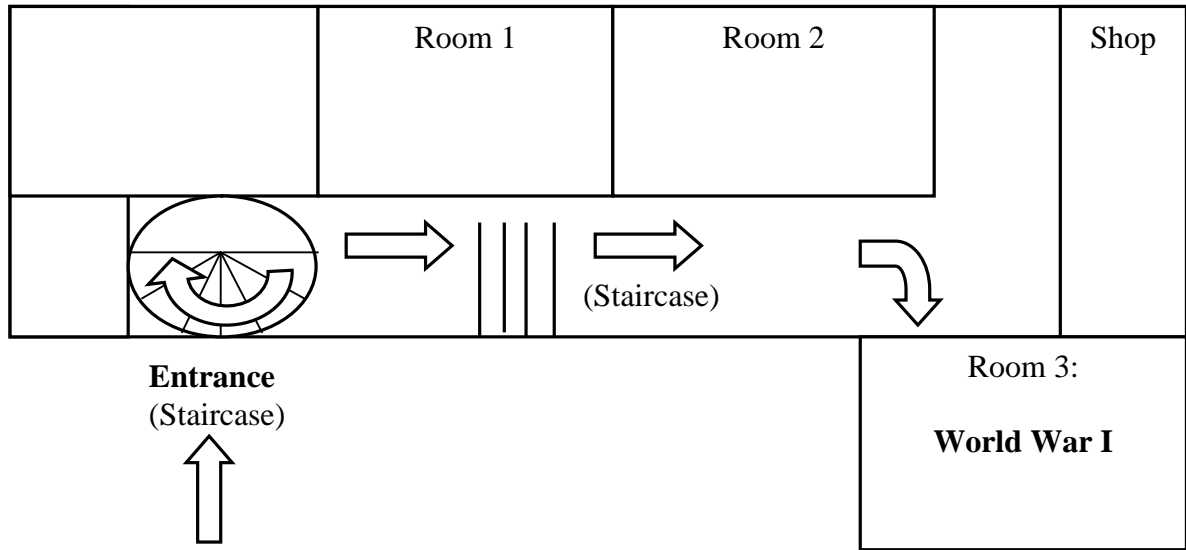
A member of staff will meet your class and escort them to the education room / World War I room where they will be introduced to the session. Your class may be split into groups depending on its size, your requirements and the activity.

Teachers and group leaders must:

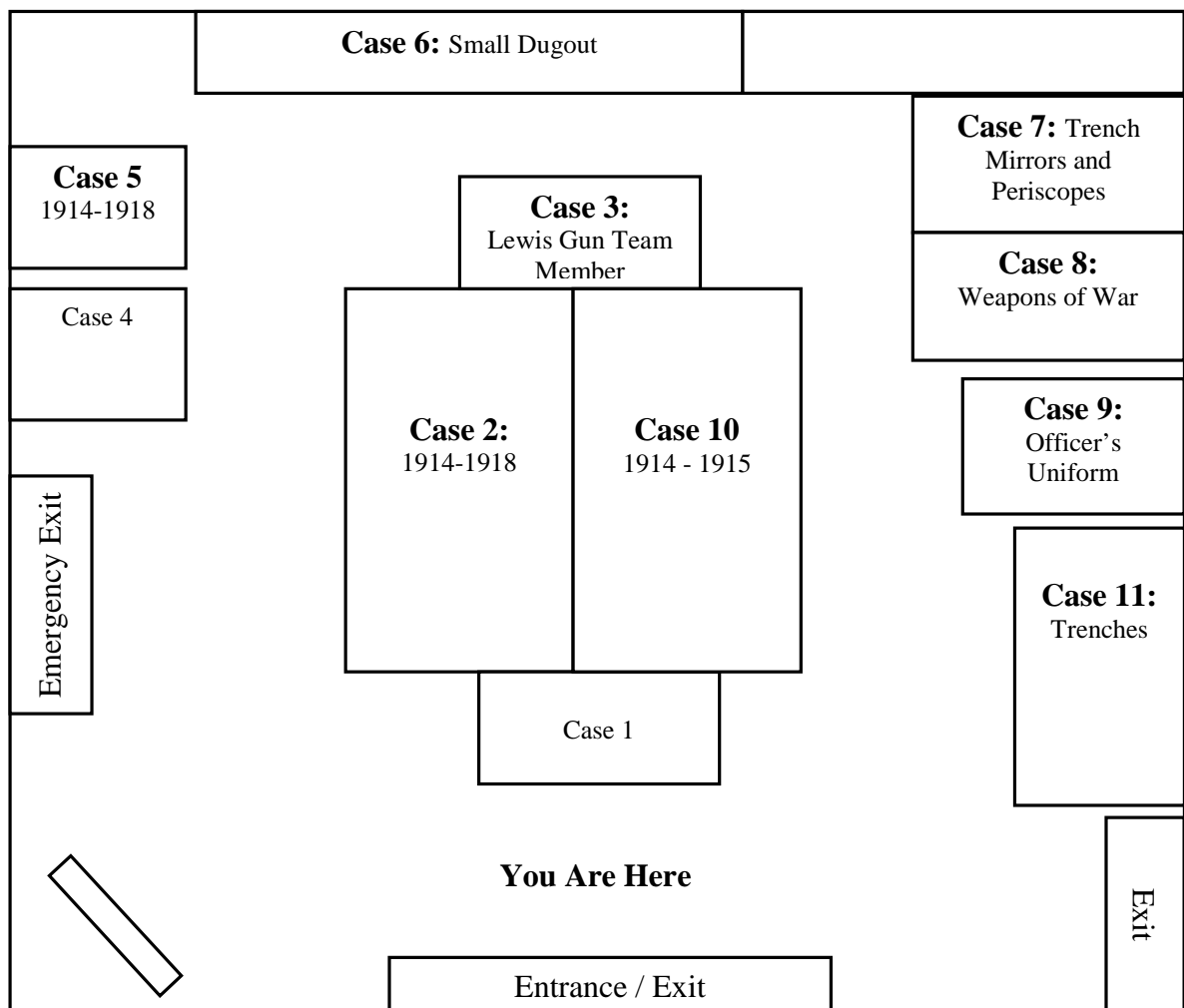
- understand that they are responsible for their pupils at all times (visitors and staff must not be disturbed by their behavior and Museum property must not be damaged in any way);
- ensure that their pupils are kept near and in sight at all times;
- ensure that their pupils are focused on the activity;
- ensure that their pupils do not lean on the cases (please use clipboards and pencils);
- minimize any health and safety issues which may arise;
- ensure that their pupils follow Museum staff instructions quietly and calmly in the event of an emergency;
- inform Museum staff if a pupil feels unwell;
- ensure that food and drink are not consumed in the Museum;
- understand that we may ask the class or group to leave the Museum if they fail to follow these rules.

Maps of the Museum

Map 1: Entrance - World War I Room



Map 2: World War I Room



Museum Activity Sheets

Welcome to The Argyll and Sutherland Highlanders Regimental Museum.

CASE 2: 1914 – 1918

1. Read the **poem** by Francis McGowan. Add two more lines to the poem.

Somebody's boy is out at the front
Somebody's boy is bearing the brunt
Somebody's heart is aching
Aching, almost breaking
Somebody's eyes are filled with tears
Over across the foam
Somebody's boy will be somebody's joy
When somebody's boy comes home

August 1915

2. Find Captain Murdoch MacTaggart's Memorial Plaque.

- a. Complete the following sentence:

A **Memorial Plaque** is also known as a _____

- b. Where was Captain Murdoch MacTaggart born?

3. Find "**To suffer death by being shot**".

- a. Why do you think 1135 Private N McPherson was sentenced to death for falling asleep whilst on sentry duty in the trenches?

CASE 3: LEWIS GUN TEAM MEMBER

1. Look carefully at the **Service Dress Uniform**.

a. Draw and label the uniform.

CASE 5: 1914 - 1918

1. Describe the **Gas Hood** (PH Phenote-Hexamine).

Think about the colour, size, material, patterns and marks.

2. What are the three types of **gas masks** shown in the photographs?

CASE 6: SMALL DUGOUT

1. Look carefully in the **Small Dugout**.

a. What does the scene tell you about a soldier's life in the trenches?

b. What questions would you like to ask the soldier?

CASE 7: TRENCH MIRRORS AND PERISCOPES

1. Look carefully at the **trench mirrors and periscopes**.

a. Why would British and German soldiers use them?

b. What materials would you use to make a trench periscope?

CASE 8: WEAPONS OF WAR

1. Draw and label two weapons of war.

2. Which object saved **Corporal Robert Watson's** life?

2. Find the **Bible** with the bullet hole. It belonged to Private Charles Hood.

a. When did he enlist?

b. How old was he?

CASE 9: OFFICER'S UNIFORM

1. Find the torch.

a. How was it switched on and off?

c. What would you be doing if you were using it?

CASE 10: 1914 -1915

1. Look carefully at the document entitled "**Order of the Day**". Explain in your own words if this is enough to end 4 years of fighting.

2. Find the document entitled "**Gallantry on Active Service**" and the campaign medals.

a. Who did they belong to?

b. Why do think he was awarded the medals?

3. Design a war medal.

4. Look carefully at the photograph of the football match between British and French prisoners at Limburg. Who do you think won the match?

CASE 11: TRENCHES

1. Find and read the poem "**The Listening Post**", the letter "**Description of Enemy Artillery Shells**" and look at the **photographs**.

a. List 5 things from the poem, letter and photographs.

b. What do they tell you about what life was like in the trenches?

2. Look carefully at the **drawings of trenches** in the case.

a. Draw and label a section of trench.

PAINTINGS, PHOTOGRAPHS & POSTERS:

1. Look up. Choose a photograph, poster or painting.

a. What can you see?

b. How would you describe the colours?

c. What is happening in it?

d. Do you like it?

WORLD WAR I ROOM

1. Why do you think the Museum put these objects in the same room?

2. What is your favourite object in the World War I room?

My favourite object is:

I like it because:

3. Draw your favourite object.

4. What three things did you learn about World War I?

